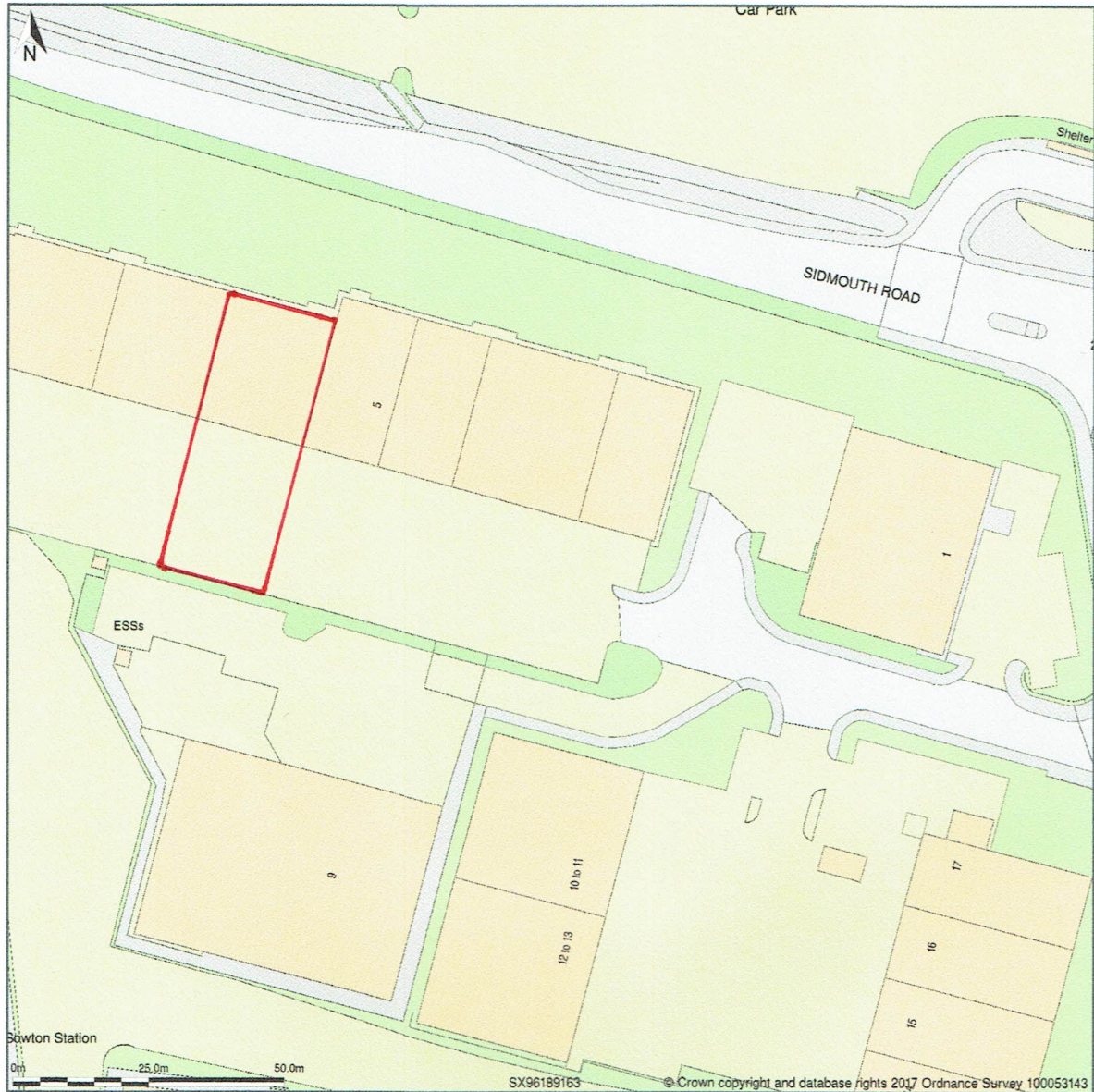


6 Apple Lane, Exeter, Devon, EX2 5GL



Site Plan shows area bounded by: 296087.11, 91532.03 296287.11, 91732.03 (at a scale of 1:1250), OSGridRef: SX96189163. The representation of a road, track or path is no evidence of a right of way. The representation of features as lines is no evidence of a property boundary.

Produced on 14th Dec 2017 from the Ordnance Survey National Geographic Database and incorporating surveyed revision available at this date. Reproduction in whole or part is prohibited without the prior permission of Ordnance Survey. © Crown copyright 2017. Supplied by [www.buyaplan.co.uk](http://www.buyaplan.co.uk) a licensed Ordnance Survey partner (100053143). Unique plan reference: #00282641-FB1810

Ordnance Survey and the OS Symbol are registered trademarks of Ordnance Survey, the national mapping agency of Great Britain. Buy A Plan logo, pdf design and the [www.buyaplan.co.uk](http://www.buyaplan.co.uk) website are Copyright © Pass Inc Ltd 2017